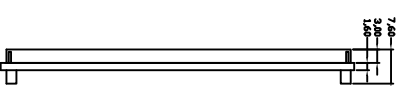
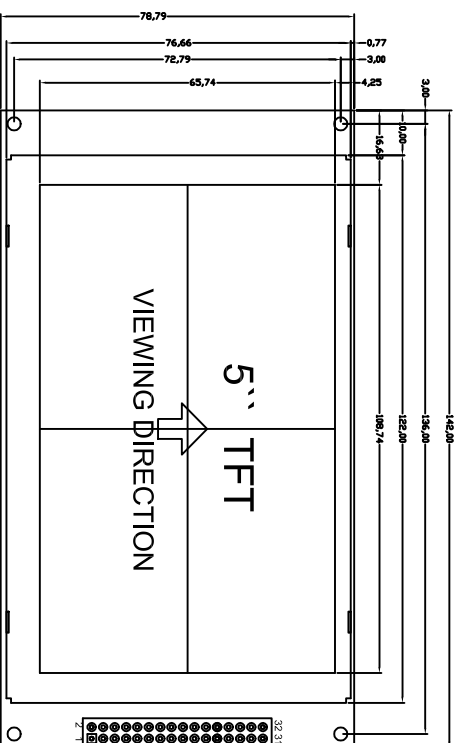



Customer approval :



Specification:

- 1). Driving: VDD:5V or 3.3V
- 2). Viewing direction: 6 o'clock
- 3). Display mode: TFT 65K
- 4). Interface: 8bit/16bit 8080/6800;
- 5). Operating temp.: -20°C~+70°C
- 6). Storage temp.: -30°C~+80°C
- 7). Control IC: SSD1963
- 8). Backlight : White
- 9). All the raw materials are RoHS compliant
- 10). Dimensions with mark "*" are important, with mark "(") are referenced

PIN	Function
1	VSS
2	VDD
3	NC
4	/MR
5	/RD
6	/CS
7	RS
8	/RST
9	DB0
10	DB1
11	DB2
12	DB3
13	DB4
14	DB5
15	DB6
16	DB7
17	DB8
18	DB9
19	DB10
20	DB11
21	DB12
22	DB13
23	DB14
24	DB15
25	BLA
26	BLK
27	TP_MSB0
28	TP_INT
29	TP_MOSI
30	TP_BUSY
31	TP_SCK
32	TP_CS

REV	REVISION RECORD	DATE	MODEL NO.	APPROVED BY	CHECKED BY	DRAWING BY	PAGE:	UNIT:
A	First issue	8/11	 深圳市三元晶科技有限公司 ShenZhen TCCLCD Hi-Tech Co., Ltd.	审核	检查	绘图	1 OF 1	mm
B				Liu	Francis	Luoxian		
C				2015/08/11	2015/08/11	2015/08/11		
D								

GENERAL TOL: ± 0.3

